



FILIP I

BRODOGRADILIŠTE

PRICE LIST 2024

Welcome to shipyard Filipi

The Shipyard Filipi d.o.o. is a family owned company with a long tradition of shipbuilding. The Filipi family are the pioneers of wooden shipbuilding in this part of the Adriatic and beyond.



1932

Family tradition

For almost a century, the Filipi family shipyard has been engaged in shipbuilding and ship repairs. We provide services of annual ship maintenance, overhaul, construction and repair of traditional wooden ships, other works in wood, installation of various marine equipment and repairs and maintenance of marine and outboard engines.

Services

01

Lifting and lowering the ship

Safe lifting or lowering of the ship with high-quality equipment.

02

Ship Maintenance

Maintenance of all types of ships using proven products.

03

Ship repair and overhaul

All kinds of ship repairs and overhauls in one place.

Marine engine repairs

Repair and maintenance of marine and outboard engines and devices.

Repair, construction and maintenance of traditional wooden boats

Repair and maintenance of traditional wooden boats.

Trips on traditional boat

Daily and half-day trips to nearby islands by traditional boat.

04

05

06

Shipyard





A tale of the sea and the ships

The Filipi shipyard was founded by Ante Filipi with his three sons Šime, Krsto and Ljubo, at this exact location in 1932. Since the mid-18th century, the Filipi family has had several smaller shipyards in Betina on the island Murter.

Because of their work they gained a great reputation and became one of the leading masters in the northern Dalmatian territory. Due to the characteristic migrations of small wooden ship building from the beginning of the 20th century, a lineage of the Filipi family, called Tošulovi, moved from Betina to Sukošan and started a new shipyard.

The Filipi family are considered the creators of wooden shipbuilding in this part of the Adriatic



1745.

Paško Filipi and his family moved from Korčula to Betina.



1932.

Starting of the shipyard in Sukošan.



2023.
and in future

Preservation of maritime and shipbuilding heritage.



In the footsteps of our grandparents

Since its establishment, the shipyard, managed by Ante's sons, grandsons and, today, great-grandsons, has been continuously engaged in the craft of shipbuilding. Today, the Filipi Shipyard actively participates in the protection and promotion of Croatian maritime and shipbuilding heritage by educating young people and children in the craft, sailing in traditional ships and maritime skills. With service and a crane for all types of boats up to 16m, they build and restore traditional wooden boats.



Filipi Shipyard

Holder of intangible cultural property (Z-7630)

The art of sailing with Latin and main sails along the Croatian coast.

Filipi with the little ones

Every year, we participate readily in various activities including the School Holiday Sports program, during which schoolchildren come to visit us. We introduce our youngest ones to traditional values, building wooden boats, and doing practice through different workshops. We enable them to feel the smell of wood at sea, and easy sailing of the historical fishing boats, gajeta, along the bay of Sukošan. We try to teach every child how to tie a knot, so that they know how to do it when they leave our yard.



Award and recognition for the development of maritime culture and preservation of tradition presented by the Ministry of the Sea, Transport, and Infrastructure. 2023.



Republika Hrvatska
MINISTARSTVO MORA,
PROMETA I INFRASTRUKTURE

We take care of the seabed

With the help of the Kanata association, together with our friends from the Roko Diving Club from Bibinje, we cleaned Zlatna Luka Bay from the long-term accumulated waste. Traditional fishing boats, gajeta, couldn't avoid this team building. Three boats, Baba Majo, Klementina and Rosanda, were on duty taking over the waste pulled out from the sea by the divers.



We transfer knowledge and measures

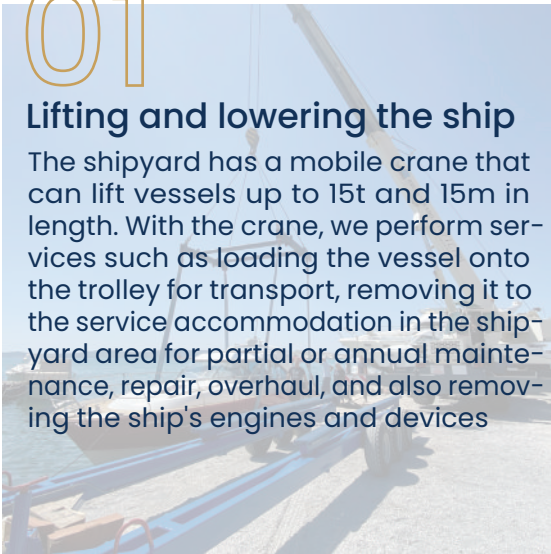
Knowledge is not measured by how much is learned, but rather by how much of it has been put into practice. Therefore, our students from Biograd na Moru High School turn theory into practice right in our shipyard workshop. They measure the ribs at the water line, transfer the measurements onto the table for measurement, test their knowledge of marine engines, and solve every "shipyard" challenge just like us.

Services

01

Lifting and lowering the ship

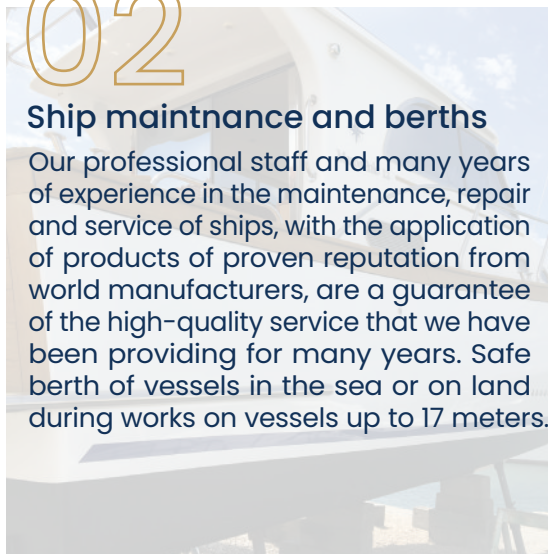
The shipyard has a mobile crane that can lift vessels up to 15t and 15m in length. With the crane, we perform services such as loading the vessel onto the trolley for transport, removing it to the service accommodation in the shipyard area for partial or annual maintenance, repair, overhaul, and also removing the ship's engines and devices



02

Ship maintenance and berths

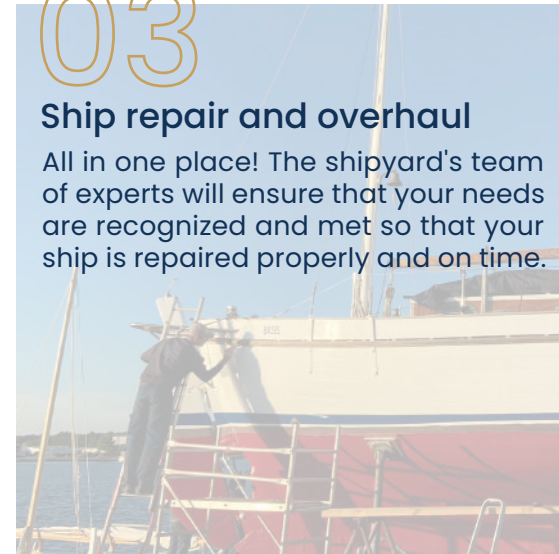
Our professional staff and many years of experience in the maintenance, repair and service of ships, with the application of products of proven reputation from world manufacturers, are a guarantee of the high-quality service that we have been providing for many years. Safe berth of vessels in the sea or on land during works on vessels up to 17 meters.



03

Ship repair and overhaul

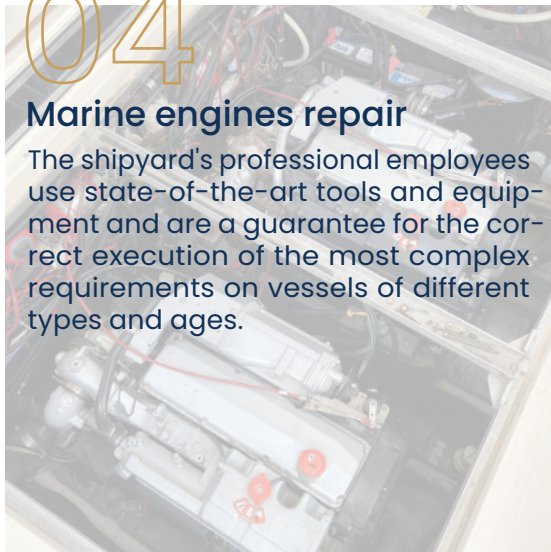
All in one place! The shipyard's team of experts will ensure that your needs are recognized and met so that your ship is repaired properly and on time.



04

Marine engines repair

The shipyard's professional employees use state-of-the-art tools and equipment and are a guarantee for the correct execution of the most complex requirements on vessels of different types and ages.



05

Repair, construction and maintenance of traditional wooden boats

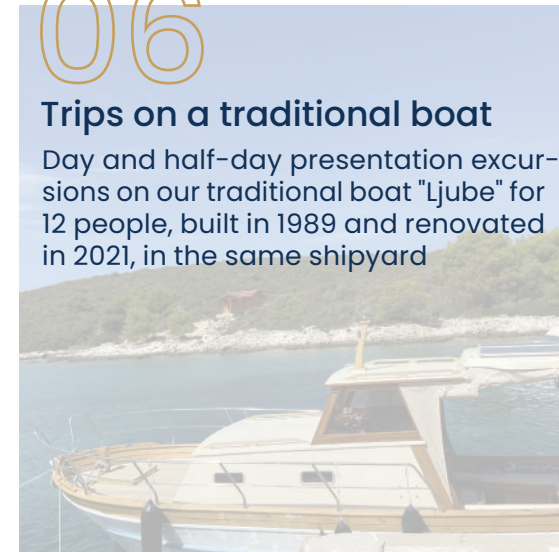
The shipyard has a complete shipbuilding workshop, equipped with all the necessary electric tools for woodworking in addition to the traditional ones, a pool for soaking wood in the traditional way, and experience and many years of tradition in wooden shipbuilding.



06

Trips on a traditional boat

Day and half-day presentation excursions on our traditional boat "Ljube" for 12 people, built in 1989 and renovated in 2021, in the same shipyard



Berth price list



LENGHT (M)	WIDTH (M)	DRY / AT SEA (DAILY)	AT SEA (YEARLY)	DRY (YEARLY)	AT SEA (SEASON) 01.04. - 30.09.*
6 - 6.99 M	2.49	30	2750	1650	2010
7 - 7.99 M	2.79	30	2970	1870	2170
8 - 8.99 M	2.99	35	3300	1980	2415
9 - 9.99 M	3.29	40	3630	2200	2660
10 - 10.99 M	3.59	45	4600	2650	3220
11 - 11.99 M	3.89	50	5175	2875	*
12 - 12.99 M	4.19	55	5750	3450	*
13 - 13.99 M	4.49	60	6900	4025	*
14 - 14.99 M	4.79	65	8050	4600	*
15 - 15.99 M	5.09	70	9200	5750	*
16 - 16.99 M	5.39	*	*	*	*
17 - 17.99 M	5.59	*	*	*	*
JET SKI		20			

YEARLY DRY BERTH PRICE INCLUDE:

- Two crane operations
- Washing the underwater part with high pressure
- Use of water for drinking
- Current for charging battery in the vessel (16A)
- One car parking space

YEARLY AND HALF-YEAR BERTH AT THE SEA PRICE INCLUDE:

- Use of water for drinking
- Current for charging battery in the vessel (16A)
- Use of sanitary facilities
- One car parking space

FOR AN EXTENDED PERIOD OF DAILY VESSEL ACCOMMODATION, THE SHIPYARD MANAGEMENT MAY APPROVE A DISCOUNT.

BY UTILIZING ANNUAL ACCOMMODATION IN THE SEA AND ON LAND, WE GRANT A DISCOUNT OF 10% FOR LAND ACCOMMODATION.

PRICE FOR CATAMARANS +100 %

*ON REQUEST

*1 RESERVATIONS FOR HALF-YEAR BERTH IS POSSIBLE UNTIL 15.03.

- The fee for receiving ship waste is included in the vessel accommodation price, amounting to 1% of the regulated accommodation price according to the shipyard's current price list for the current year. This applies to annual accommodation users.
- The fee for receiving ship waste from vessels in transit or on temporary accommodation is charged as a flat rate of 1% of the maximum accommodation price per day, according to the current price list for the current year.
- The fee for receiving excessive waste for all vessels accommodated in the shipyard is charged based on the accepted quantity, volume, or liters of waste at the price agreed with the authorized waste collector, increased for the shipyard service.

General notes

- Vessels that enter the port in the period from 8 am to 12 midnight of the same day pay a daily berthing fee which is valid for their stay in the port until 12 noon of the next day.
- The shipyard reserves the right to check the dimensions of the vessel.
- If the maximum length or width of the vessel exceeds the dimensions of a certain category, The price of the corresponding category is to be charged.
- Prices are determined by length over all (LOA)

- Use of electrical connection (16 A - 1 connection), water connection and utilities for transit vessels of up to 12.99 m in length are included in the berthing fee. For vessels of more than 12.99 m in length, the use of electrical connection (16 A), water connection (tank filling) and utilities are charged separately.
- When washing the vessel, the use of a manual water flow regulator is mandatory.
- Vessel washing is charged at a flat rate.

- A tender boat can be a vessel with a maximum length of up to 2.5 m.
- Regardless of whether tender boats are subject to registration or a vignette, they do not pay a berthing fee when they are on board the mother vessel. The user of the Annual Berthing Contract has to conclude a berthing contract for a tender boat that uses a separate berth.

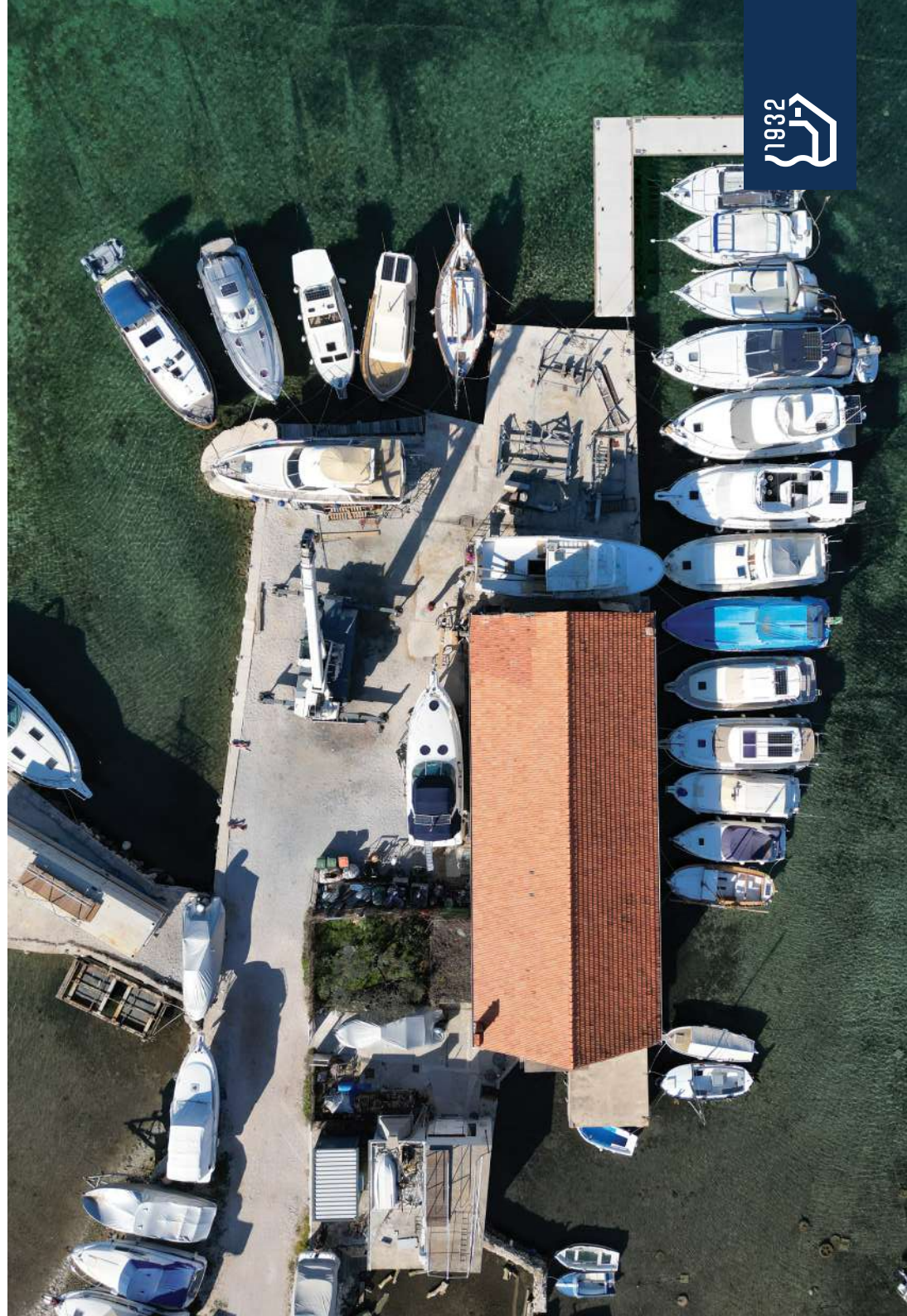
- If a tender boat uses a separate berth, and the mother vessel is not in the system of annual berthing, but only in transit, a daily berth for the tender boat is charged in accordance with the valid price list. The service is available depending on capacity availability.

*VAT INCLUDED
ALL PRICES ARE IN €

Price list other services

AUXILIARY WORKER HOUR	40 €
QUALIFIED WORKER HOUR	50 €
CARPENTER WORKING HOUR	50 €
MECHANIC WORKING HOUR	50 €
GFK/VARNISHER WORKING HOUR	50 €
OVERTIME WORK + 50 %	
POWER TOOLS RENTAL	15€ / DAY
OUTBOARD ENGINE STORAGE (UP TO 10HP)	15 € / MONTH
ENGINE START-UP AND VENTILATION OF THE VESSEL, BATTERY CHECK, VALVE INSPECTION, AND BILGE AREA AERATION MINIMUM ONCE A MONTH DURING THE WINTER PERIOD.	50 € / MONTH
SAND BLASTING WITH IBIX SYSTEM	50 € / 1 M2
REPAIR AND MANUFACTURE BOAT PROPELLERS, AXLES AND RUDDER	BY NEGOTIATION
MANUFACTURE OF SHIP FENCES, PLATFORMS AND OTHER PARTS FROM STAINLESS STEEL	BY NEGOTIATION
UNDERWATER WORK	100 € / 1H
TOWING VESSELS WITHIN THE SHIPYARD PORT	70 €
ANCHOR ROPE REPLACEMENT	60 €
OIL AND FUEL FILTER DISPOSAL	2 € / 1 KG
BOAT / TRAILER PARKING	8 € / DAY
CAR PARKING	8 € / DAY
CLEANING AND EMPTYING OF THE FAECAL	BY NEGOTIATION
CLEANING AND EMPTYING OF THE BILGE SPACE	BY NEGOTIATION
CLEANING AND EMPTYING FUEL TANK	BY NEGOTIATION
USING SHIPYARD INFRASTRUCTURE	70 € / DAILY TICKET
POLLUTION OF THE LAND SURFACE OF THE SHIPYARD	500 €
INTERVENTION IN SEA POLLUTION	2000 €
INTERVENTION IN LAND POLLUTION	500 €
VIOLATION OF THE PROVISIONS OF THE REGULATIONS ON ORDER IN THE PORT / OF THE GENERAL TERMS AND CONDITIONS OF BUSINESS (FOR ALL VIOLATIONS WHICH ARE NOT SPECIFICALLY LISTED AS INDIVIDUAL PENALTIES)	500 €
MOVEMENT OF FOUND ITEMS FOUND AND LEFT IN THE SHIPYARD AREA	100 €

SERVICE WORK DOES NOT INCLUDE MATERIALS UNLESS SPECIFICALLY STATED



Price list crane

Boat lifting and washing

LENGHT (M)	ONE OPERATION	HIGH PRESSURE WASHING	MAST CRANING
0 – 4.99 M	70	25	90
5 – 7.99 M	90	30	90
8 – 9.99 M	120	35	90
10 – 10.99 M	150	40	100
11 – 11.99 M	180	45	150
12 – 12.99 M	250	50	150
13 – 13.99 M	300	55	200
14 – 14.99 M	360	60	300
15 – 15.99 M	450	65	*
16 – 16.99 M	*	*	*
17 – 17.99 M		*	*
JET SKI	50	50	

* BY NEGOTIATION

Mobile crane service 60t, boom 32m = €150/h

The use of a crane to lift, move and measure the weight of the vessel is billed as one crane operation for that length of vessel

60t MOBILE CRANE

- Use of the mobile crane service should be announced at least two days in advance.
- Before ordering the mobile crane service or vessel repair, the work order should be read and signed by the customer, vessel user or vessel owner.
- Using a mobile crane for lifting, lowering or moving a vessel after 4pm – 8pm increases the price of the crane service by 50%. The service should be arranged in advance.
- Using the crane to lift a vessel from the trolley and lower it onto the stands is charged as one operation.
- The user/customer or the person who navigates the vessel has to inform in advance the person operating the crane about any hidden point or flaw of the vessel, as well as about devices and equipment, shaft assembly, propellers and rudders of the underwater part of the vessel, and provide accurate information about their position on the vessel that uses the crane service. Due to a lack of information provided by the customer, the shipyard will not be considered responsible in any case of damage caused to the devices or equipment located on the underwater part of the vessel

SHIPYARD

- It is forbidden to perform sanding of antifouling paint, lacquers, plastic and other materials that cause dust without a suitable vibration sander connected to a vacuum cleaner!!!
- If you do not have the appropriate maintenance tool for your vessel, you will not be able to work on the vessel itself.
- Annual maintenance for vessels in transit includes 7 days of free of charge dry berthing regardless of weather conditions in the period from October 1 to March 31, and 3 days in the period from April 1 to September 30.
- Use of the mobile crane outside working hours (4 pm- 8 pm) is charged +50%.
- The shipyard is closed on Sundays and public holidays. (It is open only in a special case announced and agreed in advance.)
- The shipyard employee's working hours do not include used material!
- Owner or user of the vessel may not use the service of a third party person or firm unless the owner or user has a written approval issued by the management or by the shipyard manager.
- Owner of the vessel has to inform the shipyard manager or supervisor in advance about every extensive work on the vessel prior to actual execution.



Price list vessel maintenance



APPLICATION OF ANTIFOULING	18 € / 1 M
GRINDING/PREPARATION ANTIFOULING	18 € / 1 M
APPLICATION OF PRIMER AND ANTI-VEGETATIVE PAINT ON THE PROPELLER PRICE WITH MATERIAL	50 € / PCS
CHANGE OF ZINC PROTECTOR PER DRIVE	35 €
VESSEL POLISHING	50 € / M
WAX APPLICATION	15 € / M
TEAK GRINDING	30 € / 1 M2
TEAK OIL APPLICATION	18 € / 1 M2
TEAK WASHING AND CLEANING	24 € / 1 M2
STAINLESS STEEL POLISHING	40 € / H
INBOARD OR OUTBOARD ENGINE MAINTENANCE	200 € / PCS



SERVICE WORK DOES NOT INCLUDE MATERIALS UNLESS SPECIFICALLY STATED

BOAT EXTERIOR WASHING

<7 M	7 - 8.99 M	9 - 9.99 M	10 - 10.99 M	11 - 11.99 M	12 - 12.99 M	13 - 13.99 M	14 - 14.99 M
70	80	100	115	125	135	150	170

IF THE VESSEL HAS A FLYBRIDGE, THE PRICE OF EXTERIOR WASHING IS INCREASED BY 20%

*VAT INCLUDED IN THE PRICE
 ALL PRICES ARE EXPRESSED IN €
 THE PRICE LIST IS VALID FOR THE CURRENT YEAR 2024.
 ALL PRICES ARE INFORMATIONAL AND SUBJECT TO CHANGE.
 WE RESERVE THE RIGHT TO CHANGES AND PRINTING ERRORS





4 5 ° 0 3 ' N 1 5 ° 1 8 ' E

Brodogradilište Filipi d.o.o.
Ždralovac 1, 23206 Sukošan - HR
+385(0) 23 393 640
service@brodogradiliste-filipi.hr
info@brodogradiliste-filipi.hr

OIB: 36685663336
IBAN OTP: HR4324070001100142530
SWIFT: OTPVHR2X